

2.6 Accessories for microbrowser panels

2.6.1 Installation systems for the microbrowser family

The correct mounting kit for all Web HMI devices

The microbrowser panel series not only fits in a switch cabinet, but also enables this modern technology to be easily and correctly integrated into the area in close proximity to the user using industrial in-wall and off-wall mounting kits. The mounting kits therefore enable simple wall mounting, which is consistently available for all panels. These kits minimise logistics and mounting costs.

7"

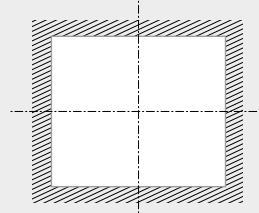
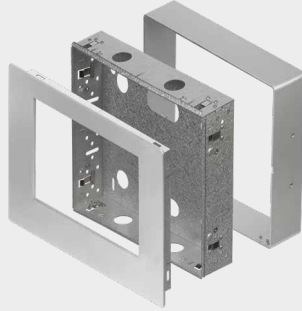
In-wall

PCD7.D457-IWS2



On-wall

PCD7.D457-OWS2



Cut-out $W \times H, 270 \times 211$
 Minimum depth
 For solid walls 75 mm
 For cavity walls 65 mm

10.4"

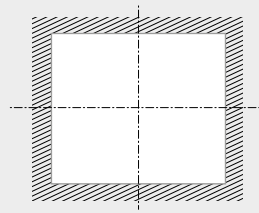
In-wall

PCD7.D410-IWS



On-wall

PCD7.D410-OWS



Cut-out $W \times H, 270 \times 211$
 Minimum depth
 For solid walls 75 mm
 For cavity walls 65 mm

12.1"

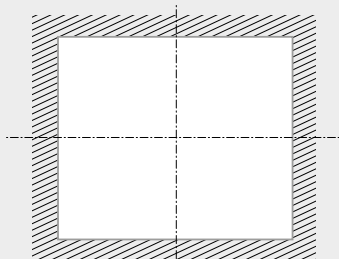
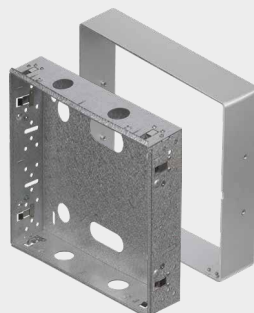
In-wall

PCD7.D412-IWS



On-wall

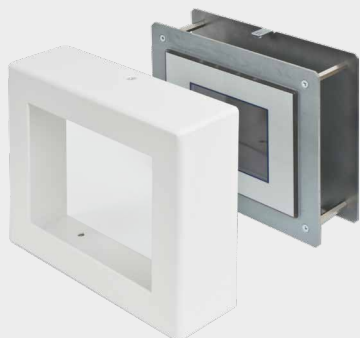
PCD7.D412-OWS



Cut-out $W \times H, 309 \times 245$
 Minimum depth
 For solid walls 75 mm
 For cavity walls 65 mm

On-wall mounting kit 7"

on-wall PCD7.D457-OWS



73,5 mm

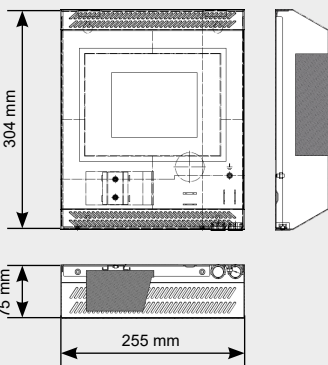
266 mm

219 mm

Width 266 mm
Height 219 mm
Depth 73.5 mm

Wall mounting kit 7"

PCD7.D457-OWS1



OEM or proprietary design

Panels with a neutral front can also be delivered in small quantities.

The standard Micro Browser Panel provide space for your own creativity. In large quantities, the panels can be visually adapted to individual room needs, with customized front foils.

Panels with neutral front

PCD7.D450WTPZ11
PCD7.D470WTPZ11
PCD7.D410VTCZ11
PCD7.D412DTPZ11
PCD7.D410VT5Z11
PCD7.D412DT5Z11



2.6.2 Fixation sets for Web Panels MB

Order details

Type	Description
3230 9178-001	Fixation set (4 pieces) for the models PCD7.D450, 2 sets necessary for the model PCD7.D412
3230 9178-002	Fixation set (6 pieces) for the models PCD7.D470, PCD7.D410

